



1601 Sqft

THE KENNES

MATERIALS, SPECIFICATIONS, AND FLOOR PLANS ARE SUBJECT TO CHANGE WITHOUT NOTICE. ALL RENDERINGS ARE ARTIST'S CONCEPTIONS. DIMENSIONS AND SQUARE FOOTAGES MAY VARY ON EACH INDIVIDUAL UNIT. GARAGE SIDE MAY VARY DUE TO LOT SELECTED. ACTUAL USABLE SPACE MAY VARY FROM THE STATED FLOOR AREA. ALL REPRESENTATIVE SQUARE FOOTAGES INCLUDE APPLICABLE FINISHED LOWER LEVEL, OPEN TO BELOW AREAS ARE EXCLUDED. E. & O.E.



THE KENNES

1601 Sqft

- 2 Bedrooms
- 2 Bathrooms
- 2 car garage

This bungalow offers 2 layout options for this design. Both comfortable and efficient, with maximized space, The Kennes is sure to please its homeowners for all it provides.

MAIN FLOOR

The 2 bedrooms and 2 baths pair with the laundry on the right side of the home. Meanwhile, the communal great room, kitchen and laundry flow across the left of the house, as seen from the entry.

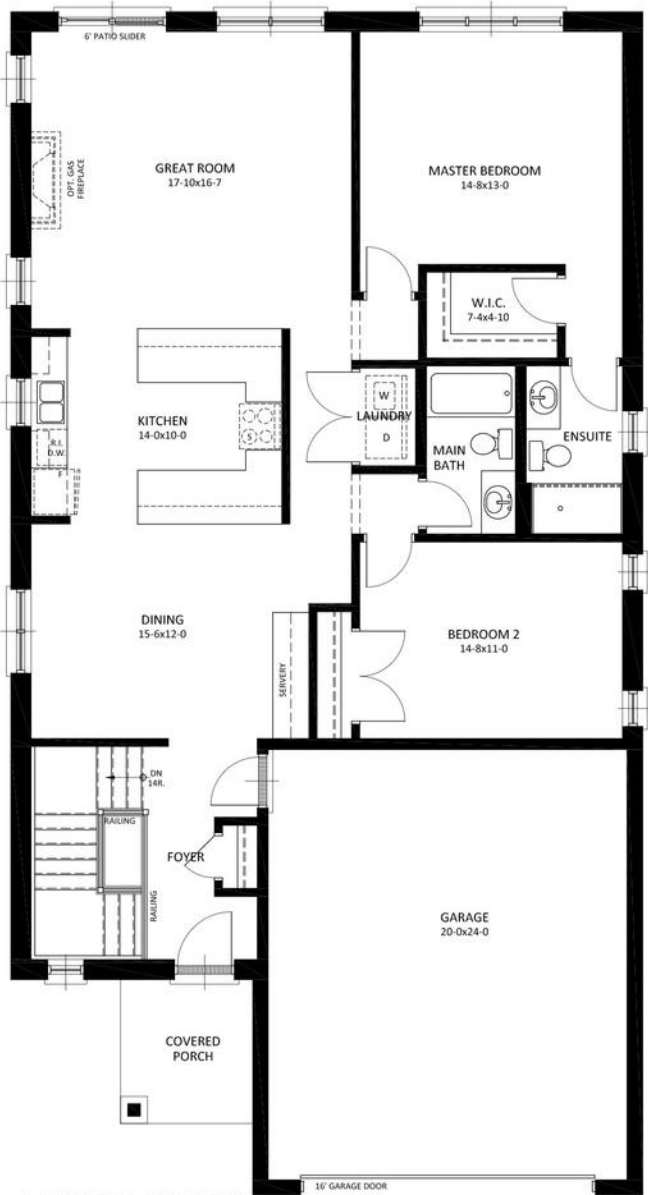
BASEMENT

The finished basement is ideal for extra storage or adding more rooms to the home in time.

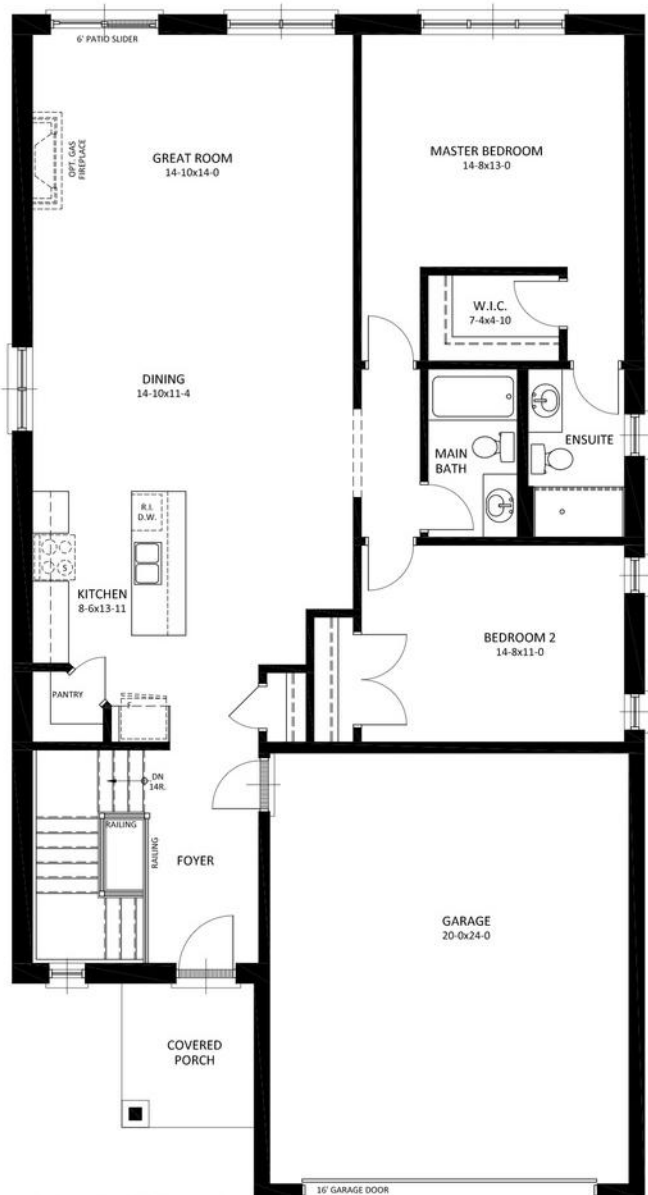


THE KENNES

1601 Sqft • 2 Bedrooms • 2 Bathrooms • 2 car garage



MAIN FLOOR PLAN
LAYOUT 1



MAIN FLOOR PLAN
LAYOUT 2



CONTACT OUR SALES TEAM

Kevin Knell

519.521.4734

sales@vranichomes.com