



2329 Sqft

THE NADEAU



MATERIALS, SPECIFICATIONS, AND FLOOR PLANS ARE SUBJECT TO CHANGE WITHOUT NOTICE. ALL RENDERINGS ARE ARTIST'S CONCEPTIONS. DIMENSIONS AND SQUARE FOOTAGES MAY VARY ON EACH INDIVIDUAL UNIT. GARAGE SIDE MAY VARY DUE TO LOT SELECTED. ACTUAL USABLE SPACE MAY VARY FROM THE STATED FLOOR AREA. ALL REPRESENTATIVE SQUARE FOOTAGES INCLUDE APPLICABLE FINISHED LOWER LEVEL, OPEN TO BELOW AREAS ARE EXCLUDED. E. & O.E.

THE NADEAU

2329 Sqft

- 4 Bedrooms
- 2.5 Bathrooms
- 2 car garage

This 2-storey home features the grandest of great rooms, spanning the width of the home. With a flowing open concept layout, the homeowner has creative freedom to design the home to their liking.

MAIN FLOOR

The massive great room faces the kitchen and breakfast nook with a powder room tucked in toward the garage entry to the home.

SECOND FLOOR

This 4 bedroom, 2 bath design has the laundry upstairs, with each bedroom being of ample size.

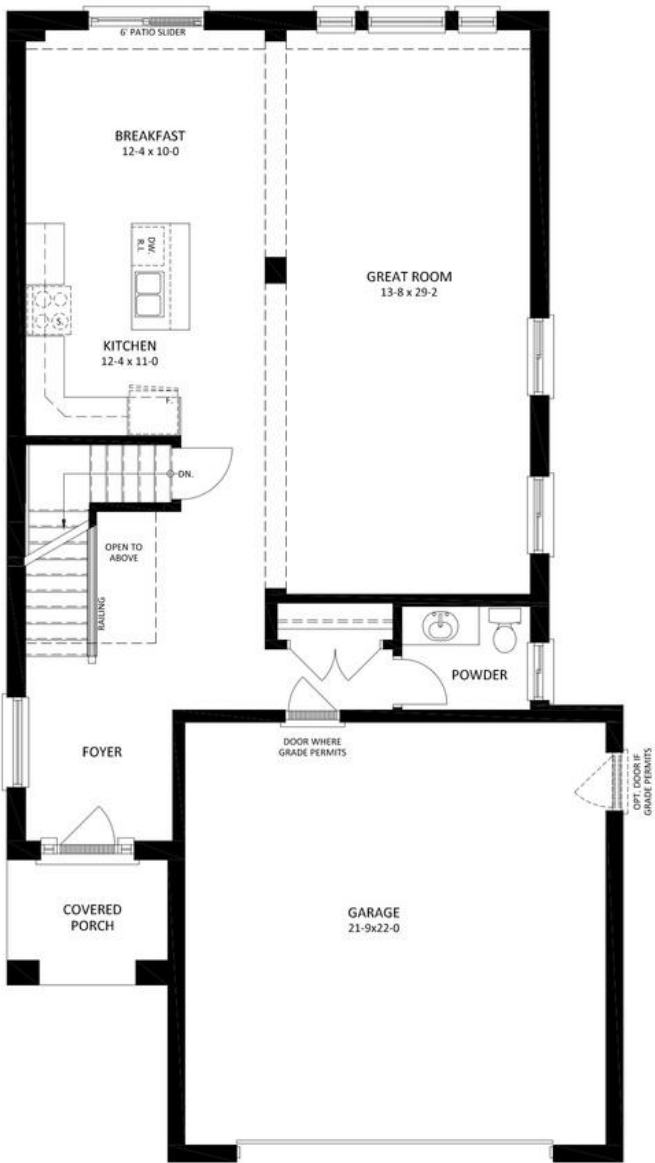
BASEMENT

The finished basement is ideal for extra storage or adding more rooms to the home in time.



THE NADEAU

2329 Sqft • 4 Bedrooms • 2.5 Bathrooms • 2 car garage



MAIN FLOOR PLAN
1083 SQ.FT.



SECOND FLOOR PLAN
1246 SQ.FT.



CONTACT OUR SALES TEAM

Kevin Knell

519.521.4734

sales@vranichomes.com