



2002 Sqft

THE OLIVEIRA



MATERIALS, SPECIFICATIONS, AND FLOOR PLANS ARE SUBJECT TO CHANGE WITHOUT NOTICE. ALL RENDERINGS ARE ARTIST'S CONCEPTIONS. DIMENSIONS AND SQUARE FOOTAGES MAY VARY ON EACH INDIVIDUAL UNIT. GARAGE SIDE MAY VARY DUE TO LOT SELECTED. ACTUAL USABLE SPACE MAY VARY FROM THE STATED FLOOR AREA. ALL REPRESENTATIVE SQUARE FOOTAGES INCLUDE APPLICABLE FINISHED LOWER LEVEL, OPEN TO BELOW AREAS ARE EXCLUDED. E. & O.E.

THE OLIVEIRA

2002 Sqft

- 3 Bedrooms
- 2.5 Bathrooms
- 2 car garage

This 2-storey home evokes a sense of luxury and grand living. This home is perfect for the urbanite looking for more space with an open concept layout on the main floor.

MAIN FLOOR

It features a cafe off of the kitchen and a great room spanning the back of the home, and there is a simple feel to The Oliveira that meets sophistication.

SECOND FLOOR

This 3 bedroom, 2 bath design creates a hotel vibe, with the second storey being dedicated to rest, restoration and self-care.

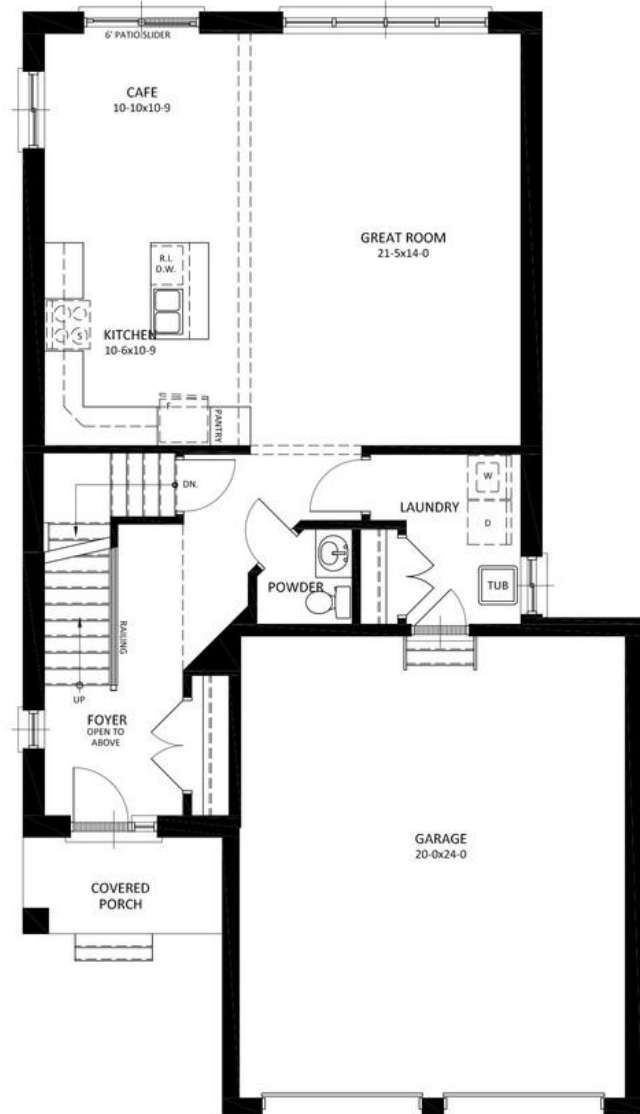
BASEMENT

The finished basement is ideal for extra storage or flex space to add a home office or gym, a media room and more.



THE OLIVEIRA

2002 Sqft • 3 Bedrooms • 2.5 Bathrooms • 2 car garage



MAIN FLOOR PLAN
972 SQ.FT.



SECOND FLOOR PLAN
1030 SQ.FT.



CONTACT OUR SALES TEAM

Kevin Knell

519.521.4734

sales@vranichomes.com