



2335 Sqft

# THE SALLISS

Plan B



MATERIALS, SPECIFICATIONS, AND FLOOR PLANS ARE SUBJECT TO CHANGE WITHOUT NOTICE. ALL RENDERINGS ARE ARTIST'S CONCEPTIONS. DIMENSIONS AND SQUARE FOOTAGES MAY VARY ON EACH INDIVIDUAL UNIT. GARAGE SIDE MAY VARY DUE TO LOT SELECTED. ACTUAL USABLE SPACE MAY VARY FROM THE STATED FLOOR AREA. ALL REPRESENTATIVE SQUARE FOOTAGES INCLUDE APPLICABLE FINISHED LOWER LEVEL, OPEN TO BELOW AREAS ARE EXCLUDED. E. & O.E.



# THE SALLISS

2335 Sqft

- 4 Bedrooms
- 2.5 Bathrooms
- 2 car garage

This 2-storey home is perfect for a growing family and entertaining with its flowing design. Choose from two or three bedroom options designed with your lifestyle in mind.

## MAIN FLOOR

Entering the home to an inviting layout with grand living and dining rooms and an open concept kitchen and breakfast nook to look out into the backyard.

## SECOND FLOOR

This 4 bedroom, 2 bath and laundry design with a large walk-in closet for the master provides comfort and convenience for the homeowner.

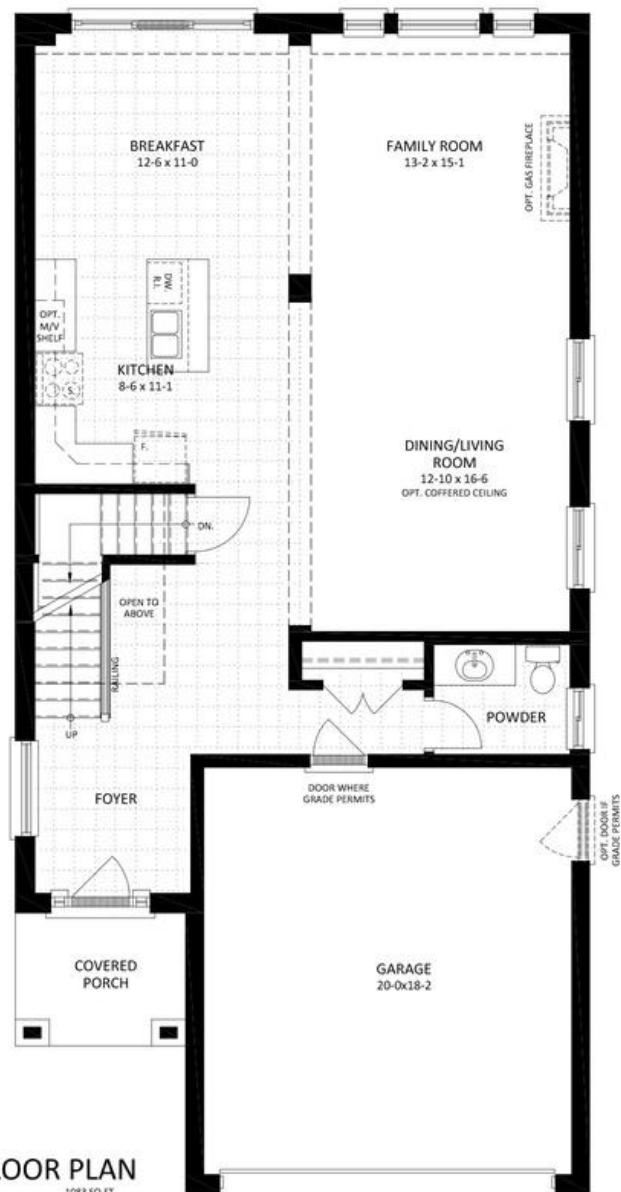
## BASEMENT

The finished basement is ideal for extra storage or flex space to add a home office or gym, a media room and more.



# THE SALLISS

2335 Sqft • 4 Bedrooms • 2.5 Bathrooms • 2 car garage





## **CONTACT OUR SALES TEAM**

Kevin Knell

519.521.4734

[sales@vranichomes.com](mailto:sales@vranichomes.com)