



1711 Sqft

# THE HILLMAN



MATERIALS, SPECIFICATIONS, AND FLOOR PLANS ARE SUBJECT TO CHANGE WITHOUT NOTICE. ALL RENDERINGS ARE ARTIST'S CONCEPTIONS. DIMENSIONS AND SQUARE FOOTAGES MAY VARY ON EACH INDIVIDUAL UNIT. GARAGE SIDE MAY VARY DUE TO LOT SELECTED. ACTUAL USABLE SPACE MAY VARY FROM THE STATED FLOOR AREA. ALL REPRESENTATIVE SQUARE FOOTAGES INCLUDE APPLICABLE FINISHED LOWER LEVEL, OPEN TO BELOW AREAS ARE EXCLUDED. E. & O.E.

# THE HILLMAN

1711 Sqft

- 3 Bedrooms
- 2.5 Bathrooms
- 2 car garage

This 2 storey home offers elegance and efficiency. With a main floor open concept layout, the homeowner has creative freedom to design the home to their liking.

## Main Floor

The spacious great room faces the kitchen and dining area with a mudroom and powder room tucked in toward the garage entry to the home.

## Second Floor

This 3 bedroom, 2 bath design has the laundry room upstairs, with each bedroom being of ample size.

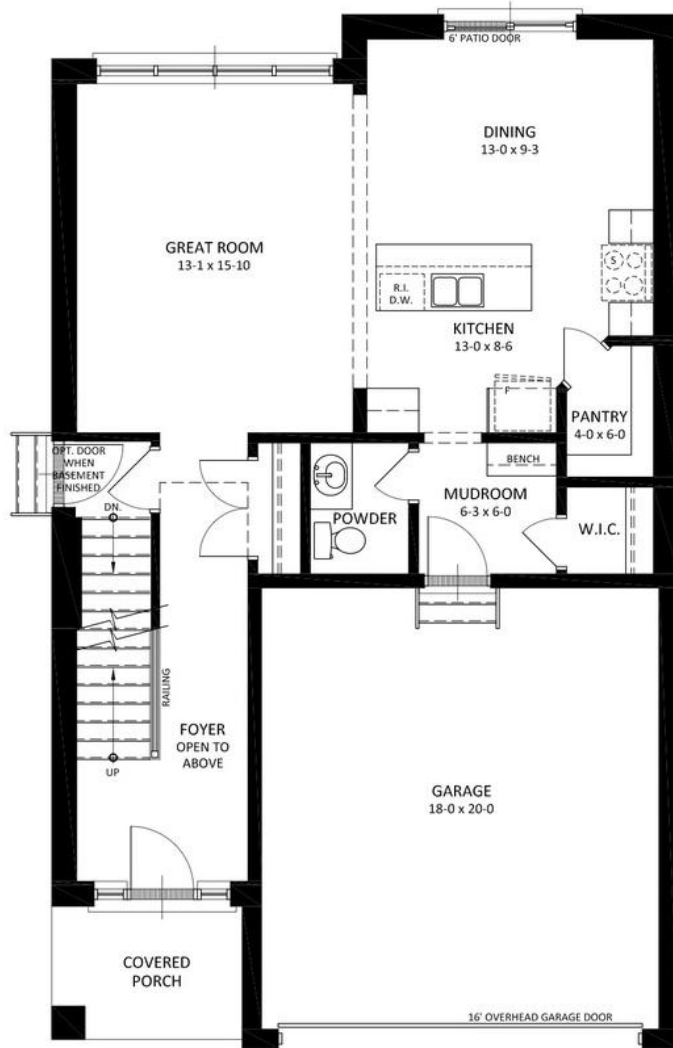
## Basement

The unfinished basement is ideal for extra storage or adding more rooms over time.



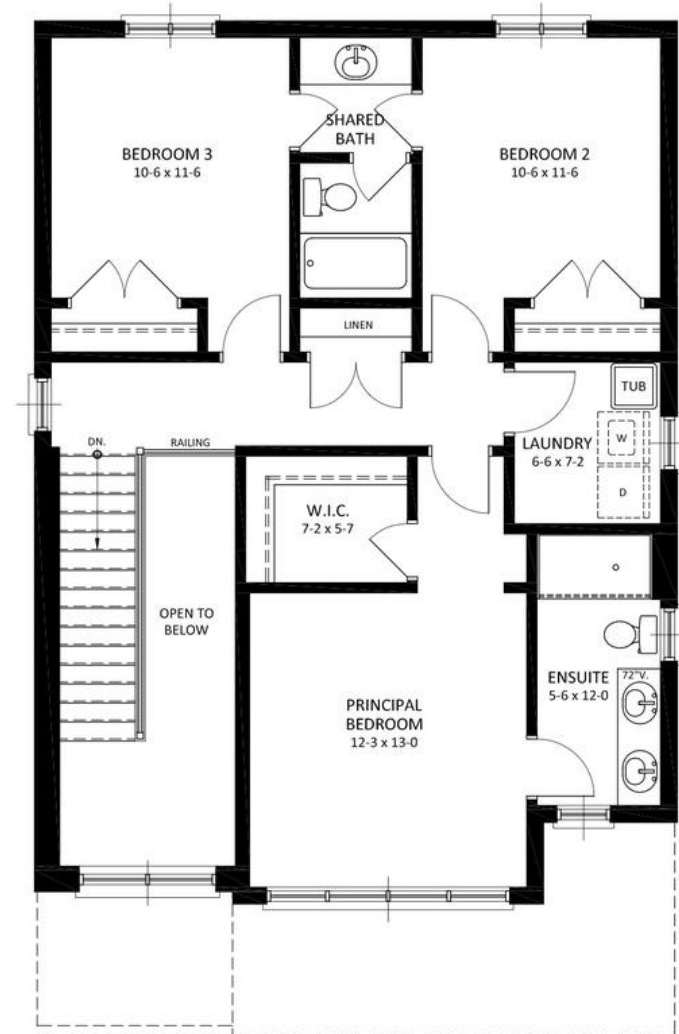
# THE HILLMAN

1711 Sqft • 3 Bedrooms • 2.5 Bathrooms • 2 car garage



MAIN FLOOR

825 sq.ft. 1711 sq.ft. TOTAL

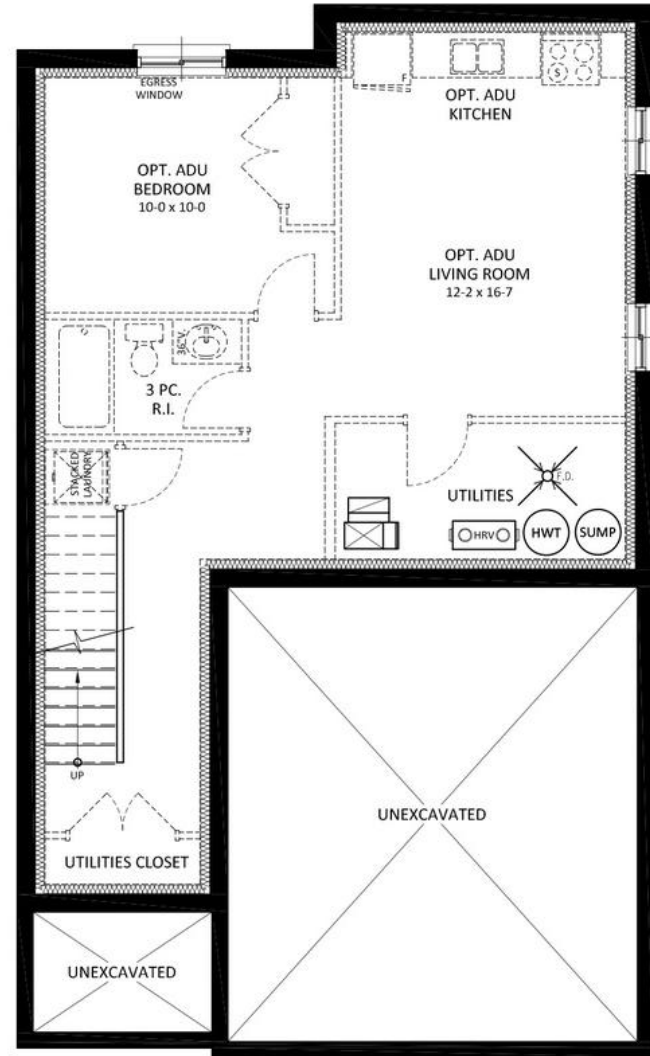


SECOND FLOOR

886 sq.ft.

# THE HILLMAN

1711 Sqft • 3 Bedrooms • 2.5 Bathrooms • 2 car garage



## FOUNDATION PLAN

OPT. 591 sq.ft.



## **CONTACT OUR SALES TEAM**

Kevin Knell

519.521.4734

[sales@vranichomes.com](mailto:sales@vranichomes.com)