



1606 Sqft

THE KNELL



MATERIALS, SPECIFICATIONS, AND FLOOR PLANS ARE SUBJECT TO CHANGE WITHOUT NOTICE. ALL RENDERINGS ARE ARTIST'S CONCEPTIONS. DIMENSIONS AND SQUARE FOOTAGES MAY VARY ON EACH INDIVIDUAL UNIT. GARAGE SIDE MAY VARY DUE TO LOT SELECTED. ACTUAL USABLE SPACE MAY VARY FROM THE STATED FLOOR AREA. ALL REPRESENTATIVE SQUARE FOOTAGES INCLUDE APPLICABLE FINISHED LOWER LEVEL, OPEN TO BELOW AREAS ARE EXCLUDED. E. & O.E.

THE KNELL

1606 Sqft

- 3 Bedrooms
- 2.5 Bathrooms
- 2 car garage

Whether it's a busy family, hosting guests or simply living space, The Knell is sure to please its homeowners for all it provides.

Main Floor

Spanning the width of the back of the home, the dining room and great room offer a choose your own adventure opportunity when it comes to furniture placement and room designation, as they all feed onto the kitchen.

Top Floor

This floor hosts 3 bedrooms. A jack and Jill bathroom. And a master bedroom with a walk in closet and large bathroom.

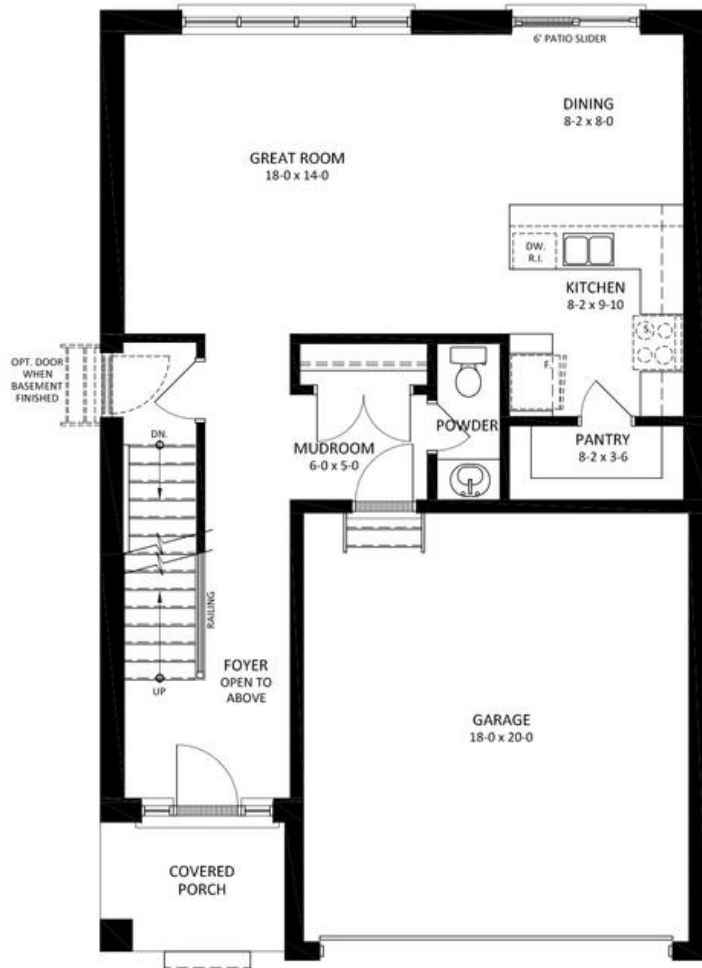
Basement

The unfinished basement is ideal for extra storage or adding more rooms over time.

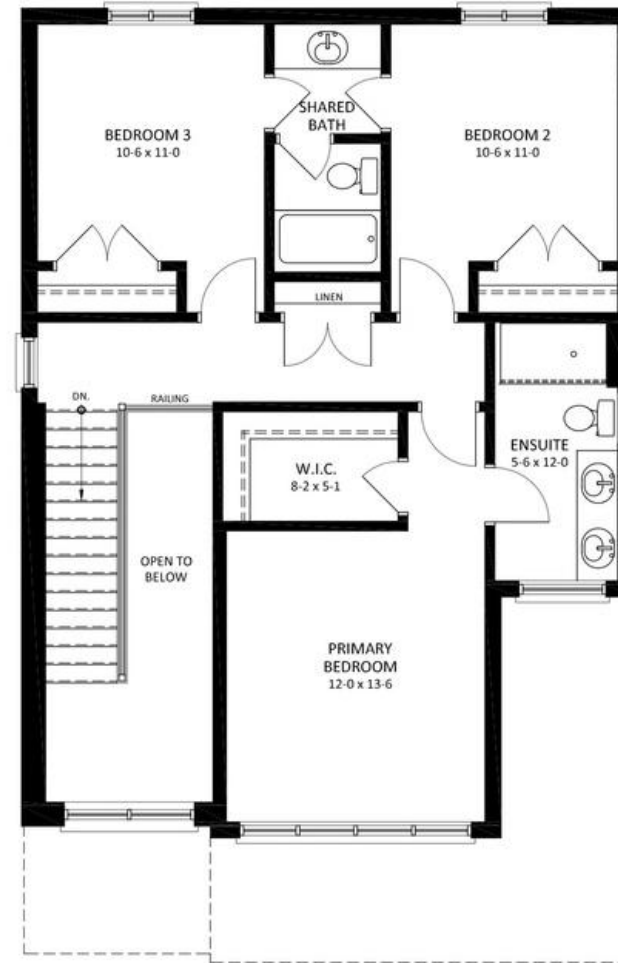


THE KNELL

1606 Sqft • 3 Bedrooms • 2.5 Bathrooms • 2 car garage



MAIN FLOOR PLAN
781 SQ.FT.



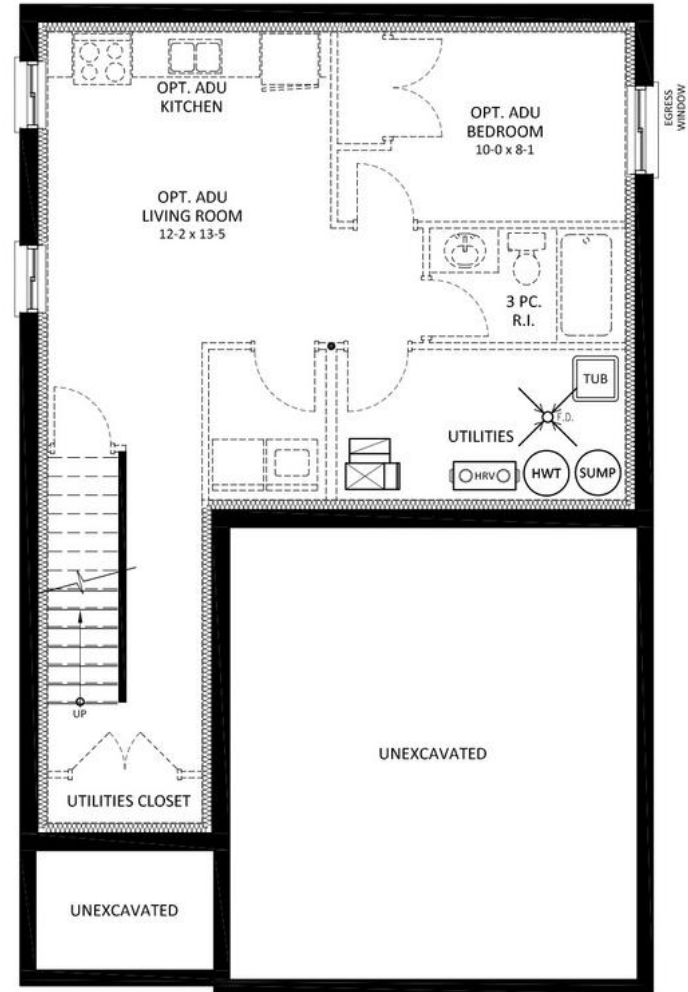
SECOND FLOOR PLAN
825 SQ.FT.

THE KNELL

1606 Sqft • 3 Bedrooms • 2.5 Bathrooms • 2 car garage



The Knell
1606 sq.ft.



FOUNDATION PLAN
OPTIONAL 591 SQ.FT.



CONTACT OUR SALES TEAM

Kevin Knell

519.521.4734

sales@vranichomes.com